

Test Report

Report No. SCL01J016175004

Page 1 of 6

Applicant SHENZHEN RUIJINGXING ELECTRONICS TECHNOLOGY CO.,LTD
Address 3FLOOR5,SKYTECHNOLOGY,HEPING,FUYONG,,BAOAN ,SHENZHEN

The following sample(s) and sample information was/were submitted and identified by/on the behalf of the client

Sample Name 陶瓷晶振
Sample Received Date Mar. 24, 2017
Testing Period Mar. 24, 2017 to Apr. 1, 2017

Test Requested As specified by client, to test Lead (Pb), Cadmium (Cd), Mercury (Hg), Hexavalent Chromium(Cr(VI)), Polybrominated Biphenyls(PBBs), Polybrominated Diphenyl Ethers(PBDEs), Phthalates(DBP, BBP, DEHP, DIBP) in the submitted sample(s).

Test Method Please refer to the following page(s).

Test Result(s) Please refer to the following page(s).



Liu Liu

Danny Liu

Danny Liu
Technical Manager

Reviewed by

Danna Fan

Date

Apr. 1, 2017

No. R187212056

Centre Testing International Group Co., Ltd.

Hongwei Industrial Zone, Bao'an 70 District, Shenzhen, Guangdong, China

Test Report

Report No. SCL01J016175004

Page 2 of 6

Test Method

Test Item(s)	Test Method	Measured Equipment(s)
Lead (Pb)	IEC 62321-5:2013 Ed.1.0	ICP-OES
Cadmium (Cd)	IEC 62321-5:2013 Ed.1.0	ICP-OES
Mercury (Hg)	IEC 62321-4:2013 Ed.1.0	ICP-OES
Hexavalent Chromium(Cr(VI))	IEC 62321-7-1:2015	UV-Vis
Polybrominated Biphenyls(PBBs)	IEC 62321-6:2015	GC-MS
Polybrominated Diphenyl Ethers(PBDEs)	IEC 62321-6:2015	GC-MS
Phthalates(DBP, BBP, DEHP, DIBP)	Refer to IEC 62321-8 CDV	GC-MS

Test Result(s)

Tested Item(s)	Result	MDL
Lead (Pb)	N.D.	2 mg/kg
Cadmium (Cd)	N.D.	2 mg/kg
Mercury (Hg)	N.D.	2 mg/kg
Hexavalent Chromium(Cr(VI))	N.D. ▼	0.10 µg/cm ² (LOQ)

Tested Item(s)	Result	MDL
Polybrominated Biphenyls(PBBs)		
Monobromobiphenyl	N.D.	5 mg/kg
Dibromobiphenyl	N.D.	5 mg/kg
Tribromobiphenyl	N.D.	5 mg/kg
Tetrabromobiphenyl	N.D.	5 mg/kg
Pentabromobiphenyl	N.D.	5 mg/kg
Hexabromobiphenyl	N.D.	5 mg/kg
Heptabromobiphenyl	N.D.	5 mg/kg
Octabromobiphenyl	N.D.	5 mg/kg
Nonabromobiphenyl	N.D.	5 mg/kg
Decabromobiphenyl	N.D.	5 mg/kg

Test Report

Report No. SCL01J016175004

Page 3 of 6

Tested Item(s)	Result	MDL
Polybrominated Diphenyl Ethers(PBDEs)		
Monobromodiphenyl ether	N.D.	5 mg/kg
Dibromodiphenyl ether	N.D.	5 mg/kg
Tribromodiphenyl ether	N.D.	5 mg/kg
Tetrabromodiphenyl ether	N.D.	5 mg/kg
Pentabromodiphenyl ether	N.D.	5 mg/kg
Hexabromodiphenyl ether	N.D.	5 mg/kg
Heptabromodiphenyl ether	N.D.	5 mg/kg
Octabromodiphenyl ether	N.D.	5 mg/kg
Nonabromodiphenyl ether	N.D.	5 mg/kg
Decabromodiphenyl ether	N.D.	5 mg/kg

Tested Item(s)	Result	MDL
Phthalates		
Dibutyl phthalate(DBP) CAS#:84-74-2	N.D.	50 mg/kg
Butylbenzyl phthalate(BBP) CAS#:85-68-7	N.D.	50 mg/kg
Di-2-ethylhexyl phthalate(DEHP) CAS#:117-81-7	N.D.	50 mg/kg
Diisobutyl phthalate(DIBP) CAS#:84-69-5	N.D.	50 mg/kg

Tested Sample/Part Description Metal pin with silvery plating

Remark: The sample(s) had been dissolved totally tested for Lead, Cadmium, Mercury.

-MDL = Method Detection Limit

-N.D. = Not Detected (<MDL or LOQ)

-mg/kg = ppm = parts per million

 -LOQ = Limit of Quantification, The LOQ of Hexavalent chromium is 0.10 µg/cm²

 -▼The sample is negative for Cr(VI) – The Cr(VI) concentration is below 0.10 µg/cm².

The coating is considered a non-Cr(VI) based coating.

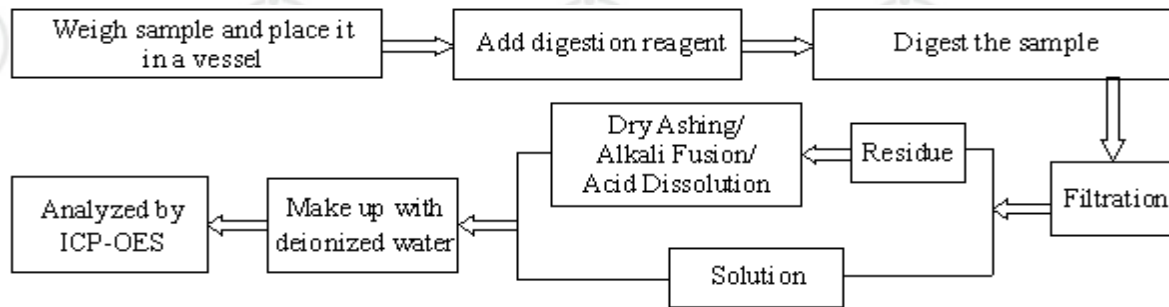
Test Report

Report No. SCL01J016175004

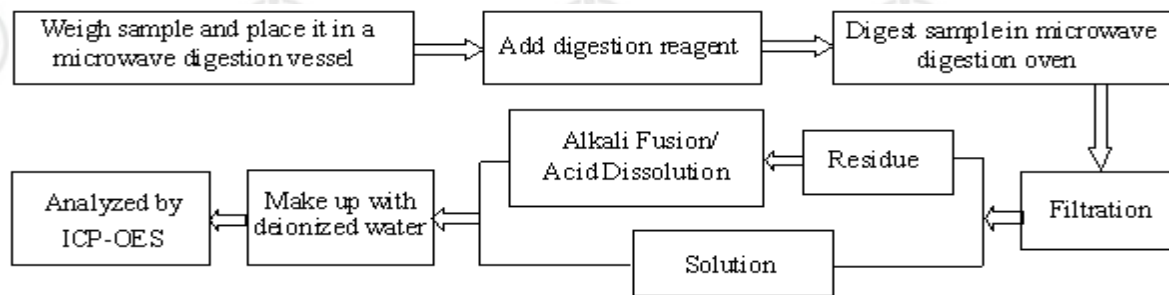
Page 4 of 6

Test Process

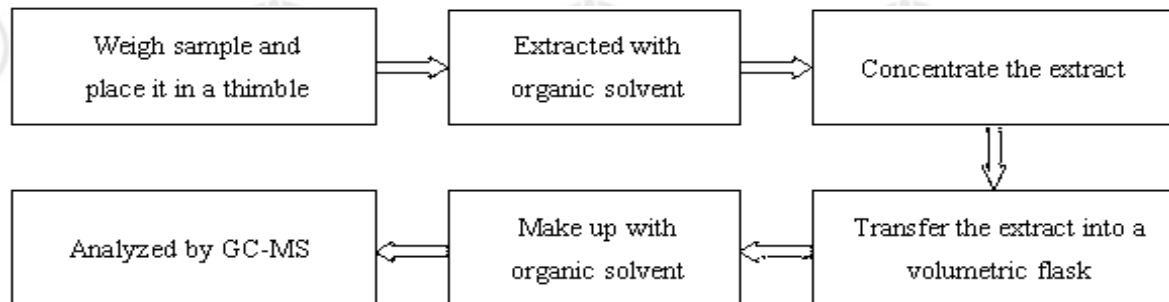
1. Lead (Pb), Cadmium (Cd)



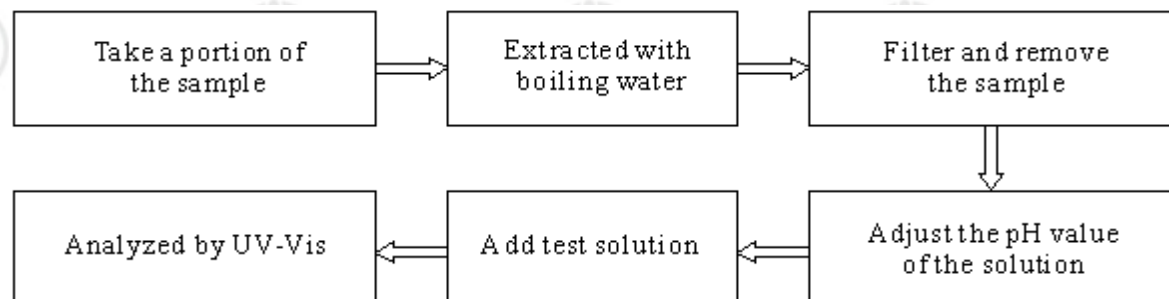
2. Mercury (Hg)



3. Polybrominated Biphenyls(PBBs) , Polybrominated Diphenyl Ethers(PBDEs)



4. Hexavalent Chromium(Cr(VI))

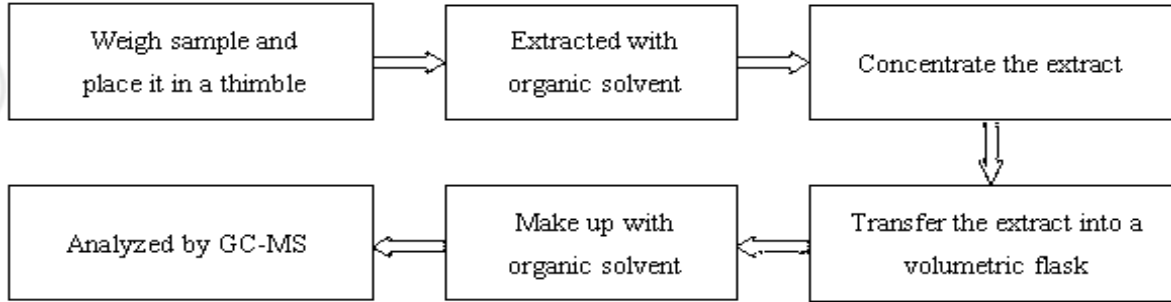


Test Report

Report No. SCL01J016175004

Page 5 of 6

5. Phthalates(DBP, BBP, DEHP, DIBP)

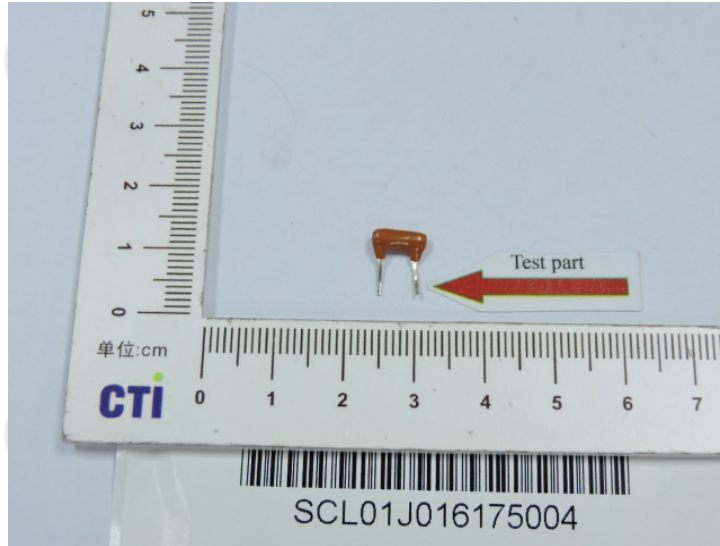


Test Report

Report No. SCL01J016175004

Page 6 of 6

Photo(s) of the sample(s)



*** End of report ***

The test report is effective only with both signature and specialized stamp. The result(s) shown in this report refer only to the sample(s) tested. Without written approval of CTI, this report can't be reproduced except in full.